

CONVENTIONAL SYMBOLS

Section Line	Building Removal Easement	B. R. E.
Quarter Line	R/W Parcel Number	3
Sixteenth Line	Access Control	o
Property Line	Access Opening	o OPEN
R/W Boundary	Cast Iron Monument or Square 50mm Iron Tube with Aluminum Cap	o
Existing D.O.T. R/W Line	20mm D.O.T. Iron Pin	o
And Other Road R/W's	Other Iron Monument	o
Railroad R/W	Concrete or Stone Monument	o
Private Easement	R/W Boundary Corner	o
Temporary Easement		

DISTANCES SHOWN TO WHOLE NUMBERS (10, 80 ETC.) ARE EXACT VALUES.

PLAT BOUNDARY DATA				
FROM	TO	DISTANCE		AZIMUTH
		FEET	METERS	
B6101	B12*	328.37	100.088	0°17'30"
B12*	B11*	13.78	4.201	87°53'24"
B11*	B2	314.59	95.887	87°53'24"
B2	B3	328.37	100.088	180°17'30"
B3	B6101	328.37	100.088	267°53'24"

*PLAT 31-47

MINNESOTA DEPARTMENT OF TRANSPORTATION
RIGHT OF WAY PLAT NO. 31-61

MAINTENANCE STORAGE SITE NO. 90136
IN GOVERNMENT LOT 1 OF SECTION 28, T. 59 N., R. 27 W.,
ITASCA COUNTY, MINNESOTA

THE COMMISSIONER OF TRANSPORTATION IS HEREBY DESIGNATING THE DEFINITE LOCATION OF MAINTENANCE STORAGE SITE NO. 90136 AT TALMOON

as shown on this plat prepared by the State of Minnesota Department of Transportation is hereby certified as the official plat of that portion of said Storage Site within the designated portion of Section 28 and the Commissioner's Order therefor pursuant to Minnesota Statutes, section 160.085, section 160.14 subd. 1, section 161.16 subd. 2, and section 161.18.

It is further ordered, that it is necessary to acquire all trees, shrubs, grass and herbage within the Right of Way and Trunk Highway, to keep and have exclusive control of the same.

Commissioner's Order No.	Location	Nature of Interest
84170	PLAT 31-61	Definite Location of Maintenance Storage Site

Certified :

Elynn Tinklenberg
Commissioner of Transportation

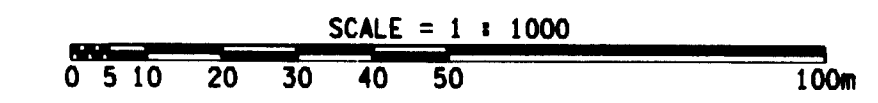
by David J. Kozicki 12-3-99
Date
Director, Office of Land Management

I hereby certify that this plat was prepared by me or under my direct supervision and that I am a duly Registered Land Surveyor under the Laws of the State of Minnesota; that this plat meets requirements of Minnesota Statutes, section 160.085, section 160.14 subd. 1, section 161.16 subd. 2, and section 161.18; that parcel ownerships are correctly described and delineated on the plat, and that the proposed right-of-way boundary lines are correctly designated on the plat.

Certified by David J. Kozicki 12-2-99
Registered Land Surveyor License No. Date
Office of Land Management

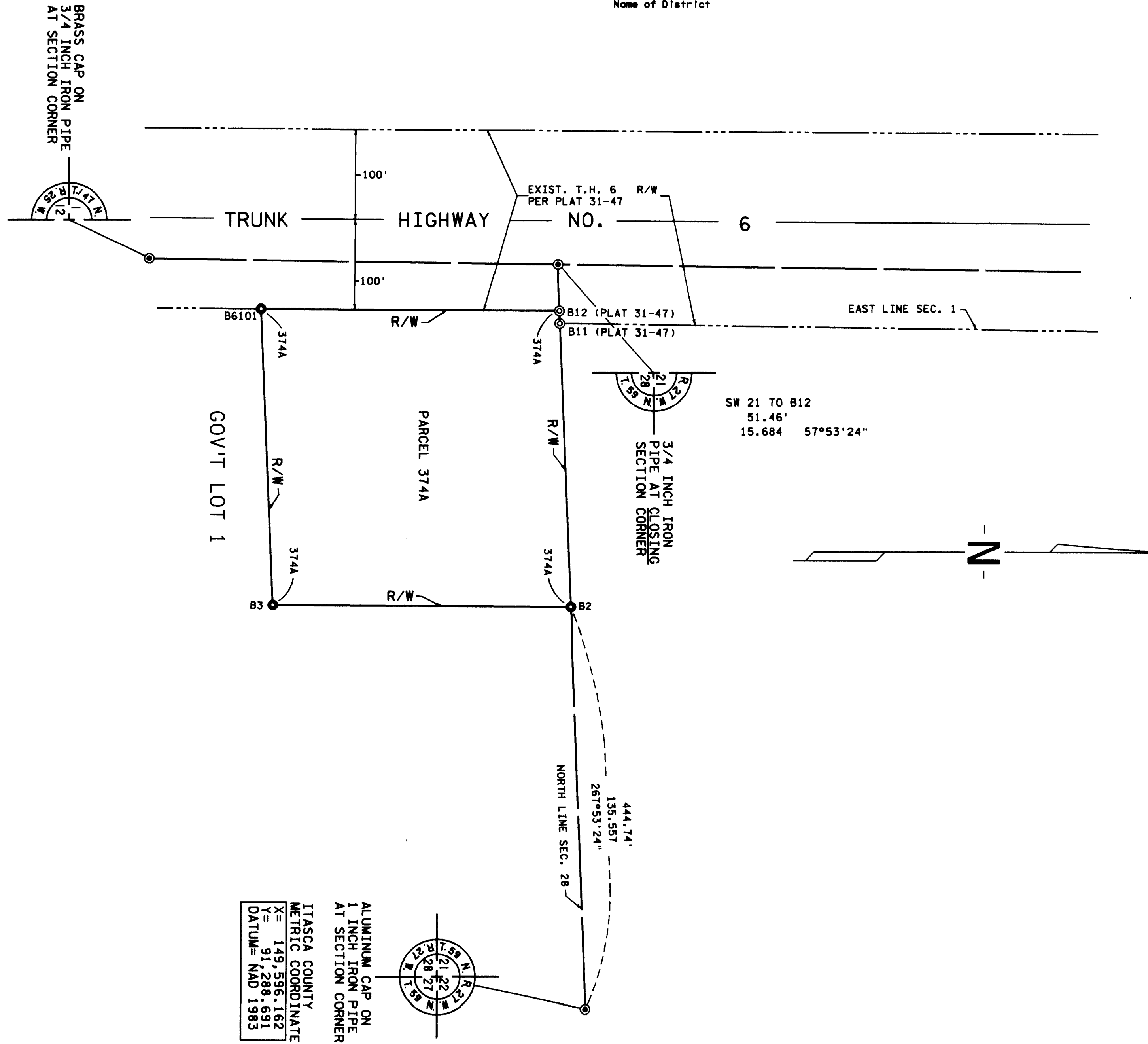
I hereby certify that this plat was surveyed by me or under my direct supervision and that I am a duly Registered Land Surveyor under the Laws of the State of Minnesota; that all measurements are correctly shown on this plat, that all monuments have been correctly placed as shown on this plat, and that Certificates of Location for the monumented public land survey corners as shown on this plat are on file in the County Recorder's Office.

Certified by David R. Doman 12-9-99
Registered Land Surveyor License No. Date
Mn/DOT District Office



METRIC/ENGLISH CONVERSION
All plat distances are in meters unless denoted as feet (').
To convert meters to (U.S. Survey) feet, multiply the meters by 3.28083333.
To convert hectares to acres, multiply hectares by 2.471.
To convert square meters to square feet, multiply the square meters by 10.764.

AZIMUTH ORIENTATION
Plat azimuths are oriented to the County Coordinate System with 0 degrees 0 minutes 0 seconds being "GRID NORTH" and all distances are ground lengths.



RIGHT OF WAY IN SECTION 28						
PARCEL	OWNER	LOCATION	TOWNSHIP CERTIFICATE NO.	MAINTENANCE STORAGE SITE		PERMANENT R/W INTEREST
				HECTARES (MORE OR LESS)	ACRES (MORE OR LESS)	
374A	STATE OF MINNESOTA	GOV'T. LOT 1		1.001	2.47	FEE

OFFICE OF THE COUNTY RECORDER
ITASCA COUNTY, MINNESOTA

Doc No A 511444

Certified filed and recorded on
12/20/1999 at 4:00 pm

Larry A. Unger, Itasca County Recorder
by C.U., Deputy



SL106 # B89

DOC. NO. 511444
OFFICE OF COUNTY RECORDER
ITASCA COUNTY, MINN.
I HEREBY CERTIFY THAT THIS
HAS BEEN FILED IN THIS OFFICE
AT 4:00 O'CLOCK P.M. ON
DEC 20 1999 PAGE 1 OF 1
BOOK 200-1-119 IN
COUNTY RECORDER